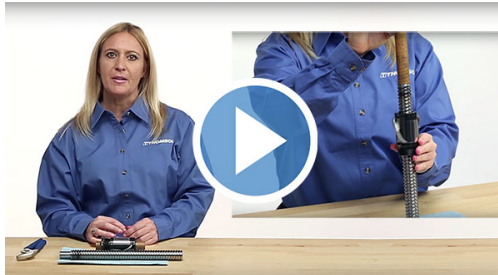


Linear  
MOTIONEERING  
ToolsMicron  
MOTIONEERINGProduct  
SelectorsInteractive  
3D ModelsPrecision  
Ball SelectorMotioneering  
Toolbar

## Avoid poor alignment, downtime and lost expenses by choosing the right linear rails for your applications

Achieving proper alignment in your machine design can sometimes be a challenge. However, knowing which linear components to use based on your design requirements can be an instant problem solver.

A recent article, "Picking the Right Linear Rails for Your Application," helps you choose amongst the main types of linear components to design automation systems that deliver optimal performance. Using real-world applications, it compares round and square (profile) rails as well as examines the specification of a linear motion system to guide your successful design.

[Read the Article >](#)[Configure Your Round and Square Rail Applications >](#)[+ education/events](#)

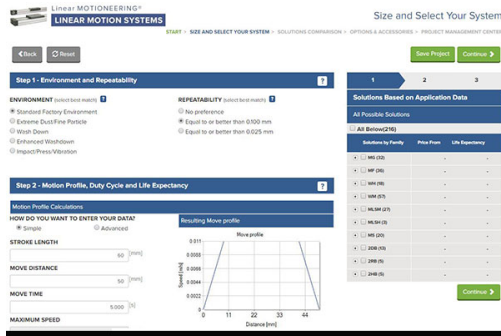
### Tech Tips Video: How to Transfer a Ball Nut to a Ball Screw

Avoid falling victim to ball bearings falling out of your ball nut when transferring it to or from a ball screw. Watch this quick video that demonstrates the proper method of installing or replacing a ball nut.

This video will come in handy for:

- New ball screw installation
- Flip orientation of a ball nut
- Ball nut replacement

[Watch the Video >](#)



## Design quicker, easier and smarter with Linear MOTIONEERING® for linear motion systems

Identify your optimal linear motion solution in minutes with our improved and expanded Linear MOTIONEERING, an intuitive tool that simplifies linear motion component sizing and selection to help you optimize your machine design.

Features and highlights include:

- Reduce time for component selection from hours to typically less than 15 minutes.
- Real-time adjustment and recalculating per your defined parameters.
- Get CAD-ready, three-dimensional models.
- Auto-population of product pricing based on your physical location.

Experience the new Linear MOTIONEERING tool now >

Share via Social Media:



Share via e-mail:

