



Linear motion solutions for OEMs

Learn how the self-lubricating Glide Screw simplifies design while eliminating external guidance and offers high precision for medical applications.

See the article on page 34 of the January/February issue of *Today's Medical Developments*.

[READ IT NOW >>>](#)



+ education/events



NEW Thomson Tech Tips Video

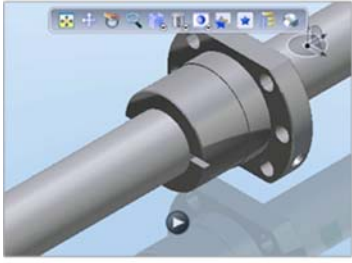
High Speed WH-Style Linear Systems

Thomson introduces the benefits of the WH SpeedLine wheel guided, belt-driven linear motion system in under a minute. These units are ideal for high speed applications with multiple orientations or multiple axis configurations. They come in 50 and 120 mm profile widths and can reach 10 m/s with a stroke length up to 11 meters.

Check out all the Thomson Tech Tips videos now.

[WATCH VIDEOS NOW >>>](#)

+ applications/tools/products



Engineering in 3-D

Easily configure, customize, and download 2-D and 3-D models for any Thomson product to include in your next design. Free 2-D and 3-D model [generators](#) can export in all major CAD formats.



[DOWNLOAD 3D MODELS >>>](#)

Share via Social Media: [Twitter](#) [Facebook](#) [LinkedIn](#) Share via email: [Email](#)

Copyright © 2015 Thomson Industries
1500 Mittel Blvd, Wood Dale, IL 60191, USA